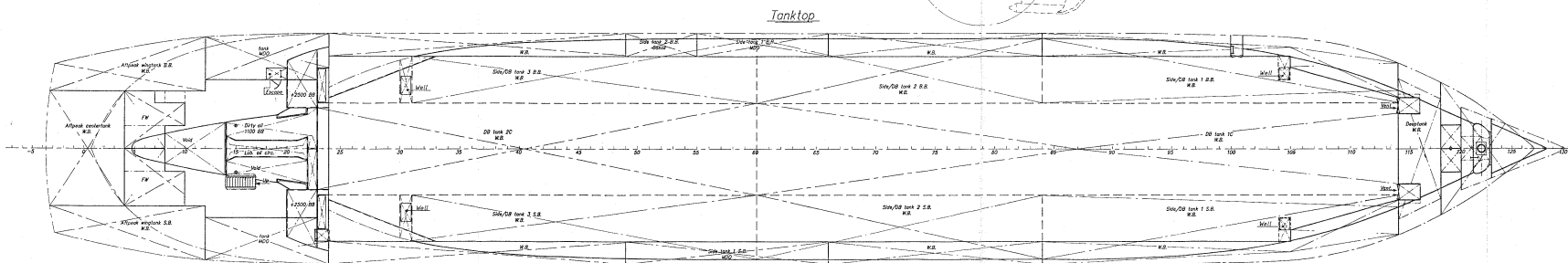


Principal particulars Ferus Smit 4200 MSB

Length over all	91,30 m
Length between P.P.	84,98 m
Breadth moulded	13,60 m
Depth	7,20 m
Draught design	5,60 m
Draught loaded	5,80 m
Deadweight loaded draught	4200 ton
Finnish Swedish Ice Class 1B	
Mainengine power about	1750 kW
Speed design draught about	12,7 knots
Tank capacities:	
Ballastwater	1600 m ³
Freshwater	2430 m ³
Sanitarywater	15 m ³
Dirtyoil	6 m ³
Lub.oil	14 m ³
Diesel	56 m ³
M.O. O. B1	260 m ³
Hydr.oil	2 m ³
Cargo hold capacity	5571m ³ - 195000 CFT
Container intake - in hold	112 TEU
on deck	100 TEU



DATE	22.7.1994	OWNER	
BY	J.P.	N.S.I.	
DATE	22.7.1994	CLASS	
DATE	22.7.1994	APPROVED BY	
DATE	22.7.1994	DATE	
DATE	22.7.1994	ALT.	
SHIPYARD FERUS SMIT B.V. WESTERBROEK			
General Arrangement 4200 MSB			
DATE	06-11-92	DESIGNER	E. Boas
SCALE	1:100	DECKED	
		YARD NO.	302-303
		DRWG. NO.	6200
		DESIGNED BY	SHIPYARD FERUS SMIT B.V.